

a | CREATE



PORTFOLIO
2024



HELLO.

This is a|CREATE

We excel at bringing ideas to life, and
we would love to be your trusted
partner on your creative journey.





SERVICES.

WE ARE A TEAM OF PROFESSIONALS WHO ARE PASSIONATE ABOUT CRAFTING VISUAL EXPERIENCES.

Our expertise spans from furniture and décor rentals, concept creation, and styling, as well as floral design and designing and producing unique furniture pieces.

We have worked tirelessly to build up a vast portfolio of hand-picked, handcrafted furniture and décor items, which includes stunning custom-made structures, chairs, tables, bar counters, rugs, soft furnishings and much more.

A photograph of a white, curved outdoor sofa on a green lawn. To the left is a white stone fountain. In the background, there are trees and a white wall. The scene is framed by green leaves in the foreground.

CONCEPT & STYLING

At a|CREATE, we continuously grow our stock to ensure it is current, on-trend, and timeless. Our range is unique and bespoke. Pair that with a Creative to style your event, and you'll create an occasion that guests will never forget.



RENTAL.

With our 'dry hire' option, if you prefer to style your own event, you can simply hire these lust-worthy pieces for your special occasion. Our selection includes not only furniture but also décor and smaller items.

a | FLORAL.

We have our own in-house florist and a vast range of décor and smalls. Our large warehouse offers the perfect space for the team to create magic in any shape or form.

What better way to tie it all together; furniture and florals, to take your celebrations to another level.





EVENTS.



CORPORATE.

From a large corporate event to an intimate dinner, a new brand launch or annual relaunch, we will help you create a memorable experience.

Working within brand guidelines and company spaces - from concept to installation - a|CREATE will ensure each requirement is met and the outcome exceeds expectation.

WEDDINGS.

At a|CREATE, we guarantee your dream wedding journey from start to finish. We'll help you bring your statement style to life.

We visit the venue, create a custom LOOKBOOK, and hire any additional décor elements required from external suppliers to ensure that everything comes together on the day.

Our service offerings enable you to enjoy the journey by letting us take care of it all.



INTIMATE MOMENTS.

Just as we maintain our collection of bespoke furniture pieces, we offer the same services to our clients; kitchen tea, engagement party, anniversary, birthday celebration or a baby shower. The possibilities for private celebrations are endless.





HOME.

What sets a|CREATE apart is our central, 816 square meter warehouse. This comes with a fully equipped production division, furniture maintenance department and houses all our furniture and décor pieces.

PRODUCTION.

Our team can assist with conceptualising, designing, restoring, producing & the creating of new, bespoke pieces for your home or your event.

With an array of equipment and talented hands, our production team can bring your vision to life.



THE PROCESS.





01 | ENQUIRY

You get in touch with us and provide us with a brief overview of what you had in mind for your celebration



02 | MEETING

Next, we will get together and discuss your brief in more detail, brainstorm ideas and get a feel for what you're after.



03 | CONCEPT

Now we'll cook up a wonderful concoction of ideas, inspired by international trends and individual style.





04 | COST & LOOK

At this stage, you can expect a detailed proposal to include a cost estimate and a lookbook to whet your creative appetite.



05 | FEEDBACK

You share your ideas and feedback on our proposal and we make any necessary tweaks.



06 | DEPOSIT

Once you are happy to go ahead with our proposal ideas, we will require a 50% deposit.



07 | PROCUREMENT

We will go ahead and liaise with the necessary third party (lighting operators, etc.)



08 | FINAL PAYMENT

The final amount is settled.



09 | SET-UP

Let the magic begin - we will personally coordinate every aspect of the setup on the day, from the flower installations and lighting design to the furniture delivery and placement.





10 | SHOWTIME

Your event looks spectacular and you take all the credit. Afterwards, we remove and reinstate everything at your venue – as if we were never there.



THE TEAM.



SALES
MANAGER

Kelly-Ann
Turner



LEAD FLORAL
DESIGNER

Letitia
Riley



FLORAL
STYLIST

Christina
Du Preez



LEAD
CREATIVE

Leandri
Herrewyn



ASSISTANT
CREATIVE

Karley
Lotz



ASSISTANT
CREATIVE

Razel
Swart



PRODUCTION
MANAGER

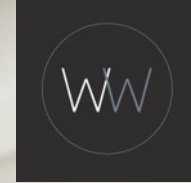
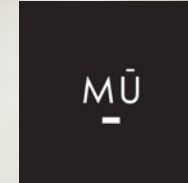
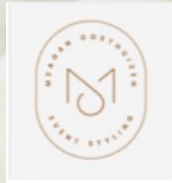
Hudson
Toperesu



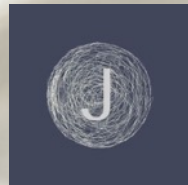
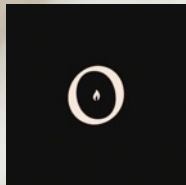
LOGISTICS &
WAREHOUSE
MANAGER

Gabriel
Visser

CLIENTS & COLABS.



JAN



GUCCI



Bloomberg



THAT'S US.

Thank you for the opportunity to present you with this portfolio. We trust that we'll assist you in arranging a most memorable event.





GET IN TOUCH.

SECTION 77 & 78 | BUILDING 8
THE OLIVE GROVE BUSINESS PARK
OU PAARDE VLEI ROAD
SOMERSET WEST

HELLO@ACREATE.CO.ZA
WWW.ACREATE.CO.ZA

facebook.com/acreateza
instagram.com/acreate_za

FURNITURE | DÉCOR | STYLING | FLORAL