

# a | CREATE

PORTFOLIO  
2025





# HELLO.



This is a|CREATE

We excel at bringing ideas to life, and  
we would love to be your trusted  
partner on your creative journey.





# SERVICES.

WE ARE A TEAM OF PROFESSIONALS WHO ARE  
PASSIONATE ABOUT CRAFTING VISUAL  
EXPERIENCES.

Our expertise spans from furniture and décor  
rentals, concept creation, and styling, as well as  
floral design and designing and producing unique  
furniture pieces.

We have worked tirelessly to build up a vast  
portfolio of hand-picked, handcrafted furniture and  
décor items, which includes stunning custom-made  
structures, chairs, tables, bar counters, rugs, soft  
furnishings and much more.





# CONCEPT & STYLING

At a|CREATE, we continuously grow our stock to ensure it is current, on-trend, and timeless. Our range is unique and bespoke. Pair that with a Creative to style your event, and you'll create an occasion that guests will never forget.





## RENTAL.

With our 'dry hire' option, if you prefer to style your own event, you can simply hire these lust-worthy pieces for your special occasion. Our selection includes not only furniture but also décor and smaller items.



## a|FLORAL.

We have our own in-house florist and a vast range of décor and smalls. Our large warehouse offers the perfect space for the team to create magic in any shape or form.

What better way to tie it all together; furniture and florals, to take your celebrations to another level.







EVENTS.





# CORPORATE.

From a large corporate event to an intimate dinner, a new brand launch or annual relaunch, we will help you create a memorable experience.

Working within brand guidelines and company spaces - from concept to installation - a|CREATE will ensure each requirement is met and the outcome exceeds expectation.



# WEDDINGS.

At a|CREATE, we guarantee your dream wedding journey from start to finish. We'll help you bring your statement style to life.

We visit the venue, create a custom LOOKBOOK, and hire any additional décor elements required from external suppliers to ensure that everything comes together on the day.

Our service offerings enable you to enjoy the journey by letting us take care of it all.





# INTIMATE MOMENTS.

Just as we maintain our collection of bespoke furniture pieces, we offer the same services to our clients; kitchen tea, engagement party, anniversary, birthday celebration or a baby shower. The possibilities for private celebrations are endless.







# HOME.

What sets a|CREATE apart is our central, 816 square meter warehouse. This comes with a fully equipped production division, furniture maintenance department and houses all our furniture and décor pieces.



# PROJECT PLANNING & STYLING.

At a|CREATE, we specialise in more than just beautiful pieces—we bring your entire vision to life through expert project planning and styling.

From concept to execution, our team partners closely with clients to craft cohesive and captivating spaces, whether for events or interiors.





A photograph of a modern outdoor lounge area. In the foreground, a large white modular sofa sits on a green lawn. To its left is a wooden bench with a white cushion. In the center, two white armchairs with wooden legs are positioned on a patterned rug. To the right, another wooden bench with a white cushion is visible. In the background, there are two tall white rectangular screens, a table covered with a white cloth and decorated with greenery, and a large green bush. A white building with a window is partially visible on the right. The text "THE PROCESS." is overlaid in white serif font on the right side of the image.

THE PROCESS.





## 01 | ENQUIRY

You get in touch with us and provide us with a brief overview of what you had in mind for your celebration



## 02 | MEETING

Next, we will get together and discuss your brief in more detail, brainstorm ideas and get a feel for what you're after.



## 03 | CONCEPT

Now we'll cook up a wonderful concoction of ideas, inspired by international trends and individual style.







## 04 | COST & LOOK

At this stage, you can expect a detailed proposal to include a cost estimate and a lookbook to whet your creative appetite.



## 05 | FEEDBACK

You share your ideas and feedback on our proposal and we make any necessary tweaks.



## 06 | DEPOSIT

Once you are happy to go ahead with our proposal ideas, we will require a 50% deposit.





## 07 | PROCUREMENT

We will go ahead and liaise with the necessary third party (lighting operators, etc.)



## 08 | FINAL PAYMENT

The final amount is settled.



## 09 | SET-UP

Let the magic begin - we will personally coordinate every aspect of the setup on the day, from the flower installations and lighting design to the furniture delivery and placement.







## 10 | SHOWTIME

Your event looks spectacular and you take all the credit. Afterwards, we remove and reinstate everything at your venue - as if we were never there.



# THE TEAM.



SALES  
MANAGER

Kelly-Ann  
Turner



LEAD FLORAL  
STYLIST

Letitia  
Riley



LEAD  
CREATIVE

Leandri  
Herrewyn



CREATIVE

Karley  
Lotz

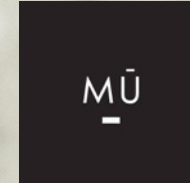
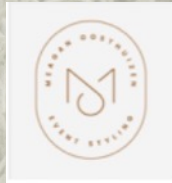


CREATIVE

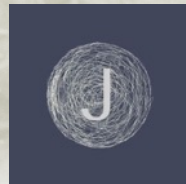
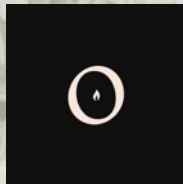
Razel  
Swart



# CLIENTS & COLABS.



JAN



GUCCI



Bloomberg







# THAT'S US.

Thank you for the opportunity to  
present you with this portfolio. We  
trust that we'll assist you in arranging  
a most memorable event.





# GET IN TOUCH.

SECTION 77 & 78 | BUILDING 8  
THE OLIVE GROVE BUSINESS PARK  
OU PAARDE VLEI ROAD  
SOMERSET WEST

**HELLO@ACREATE.CO.ZA**  
**WWW.ACREATE.CO.ZA**

*facebook.com/acreateza*

*instagram.com/acreate\_za*

**FURNITURE | DÉCOR | STYLING | FLORAL**